



jordan fishwick

DIDSBURY VILLAGE
Old Oak Street



Old Oak Street, Didsbury Village, M20 6RH

Offers Over £235,000



The Property

A most appealing ONE BEDROOM apartment enjoying a GREAT LOCATION in the heart of DIDSBURY VILLAGE, with spacious & stylish living space throughout and ALLOCATED PARKING. The accommodation benefits from gas central heating and double glazed windows, in outline:- Private entrance with wooden flooring and large built-in storage cupboards, a light and spacious living room with walk in bay window with views over communal gardens and additional window to the front aspect, fitted kitchen with tiled floor, double bedroom with fitted wardrobe and twin aspect windows and bathroom fitted with 4 piece suite with separate shower cubical. Outside, there is an allocated parking space and communal gardens. The property is centrally located in Didsbury Village and local restaurants, bars, shops and Metrolink are all within a short walk. No chain.

Directions

M20 6RH



- A spacious one bedroom ground floor apartment
- Central Didsbury Village location
- Off road parking
- Close to Metro Station
- Private entrance
- Gas central heating
- Master bedroom with built in wardrobe
- No chain

Postcode - M20 6RH

EPC Rating - C

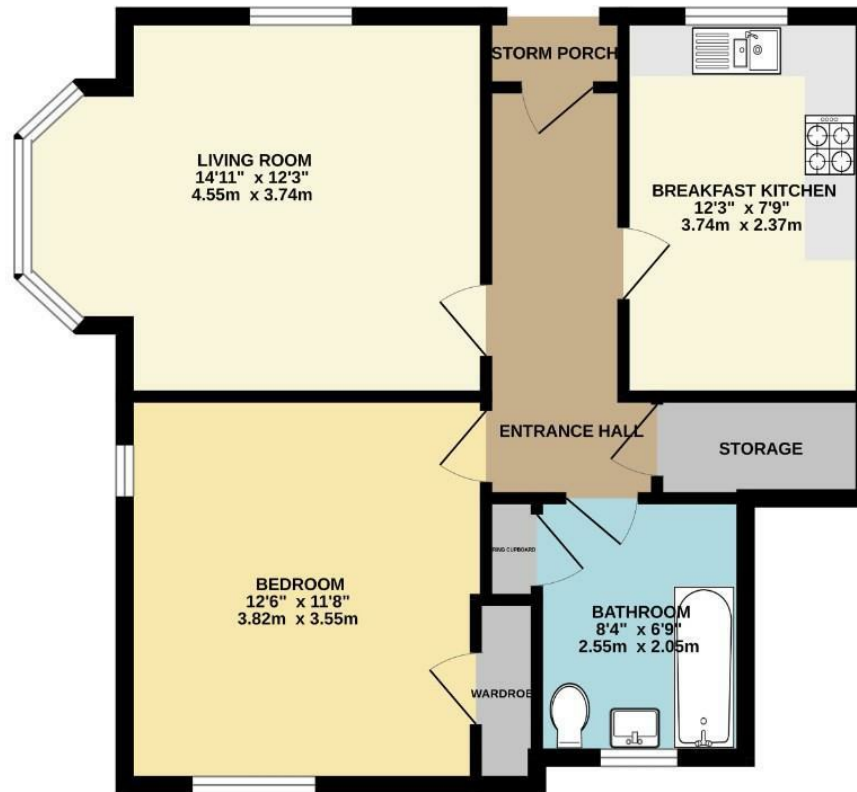
Floor Area - 572.00 sq ft

Local Authority - Manchester City Council

Council Tax - D



GROUND FLOOR
572 sq.ft. (53.2 sq.m.) approx.



TOTAL FLOOR AREA: 572 sq. ft. (53.2 sq. m.) approx.
Measurements are approximate. Not to scale. Illustrative purposes only.
Made with Metrcax ©2025



These particulars are believed to be accurate but they are not guaranteed and do not form a contract. Neither Jordan Fishwick nor the vendor or lessor accept any responsibility in respect of these particulars, which are not intended to be statements or representations of fact and any intending purchaser or lessee must satisfy himself by inspection or otherwise as to the correctness of each of the statements contained in these particulars. Any floorplans on this brochure are for illustrative purposes only and are not necessarily to scale.

Offices also at: Wilmslow, Macclesfield, Hale, Sale, Chorlton, Glossop, Manchester & Salford

757-759 Wilmslow Road, Didsbury Village, Manchester

0161 445 4480

didsbury@jordanfishwick.co.uk
www.jordanfishwick.co.uk